

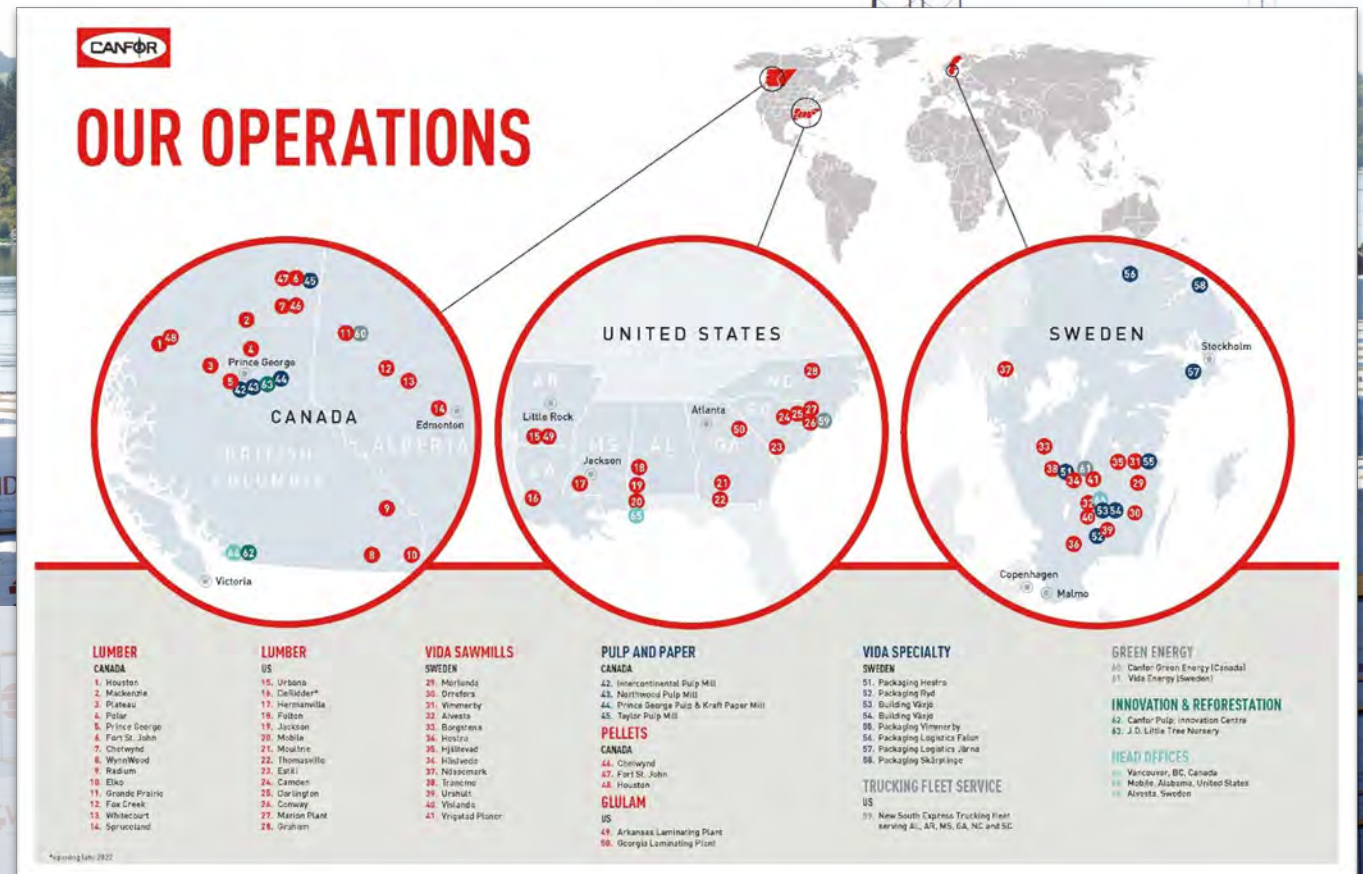
A company with long history

- | | |
|--|---------------------------------------|
| 1977 Alvesta Träförädling | 2003 Vida Skog and Vida Energ |
| 1979 The two sawmills are sold to the state Domänverket | 2004 Wisswood AB |
| 1983 Both sawmills are bought back by 7 employees | 2006 Lessebo papermill |
| 1987 Tom Heurlin in Dalsland | 2007 Vimmerby, Österlövsta |
| 1989 John Neikter (<i>Urshult</i>) | 2011 HN in Hästveda |
| 1993 Bruza Timber (<i>Hjältevad</i>) | 2011 Vida Building |
| 2000 Hestra sawmill | 2015 Moelven Wood in Nössemark |
| 2000 Ljungby sawmill | 2016 Tranemo sawmill |
| 2000 Vida Wood | 2020 Bergs sawmill |
| 2002 Anderssons sawmill in Borgstena | 2022 Vida Vrigstad |
| 2003 The pallet factory in Ryd | |



Canfor

70% of the shares in Vida are owned by the Canadian company Canfor.





Vida in numbers

- ***Sales:*** £1 billion
- ***Employees:*** 1 500
- ***Production facilities:*** 23
- ***Production:*** 2 700 000 m³
- ***Export:*** 75%

Vidas anläggningar

Alvesta

Sågverk

Borgstena

Sågverk

Falun

Lager/logistik för trummor och emballage

Gransjö

Torkar, justerar och hyvlar

Hestra

Sågverk samt tillverkning av pallkragar och kabeltrummor

Hjältevad

Sågverk

Hok

Pellets- och stallströtillverkning

Hästveda

Sågverk

Mörlunda

Sågverk

Nössemark

Sågverk



Orrefors

Sågverk

Ryd

Tillverkning av lastpall och kompositprodukter

Tranemo

Sågverk

Urshult

Sågverk

Vimmerby

Sågverk samt tillverkning av pall och specialpall

Vislanda

Sågverk

Vrigstad

Hyvleri

Växjö

Hustillverkning

Österlövsta

Tillverkning av pall och specialemballage

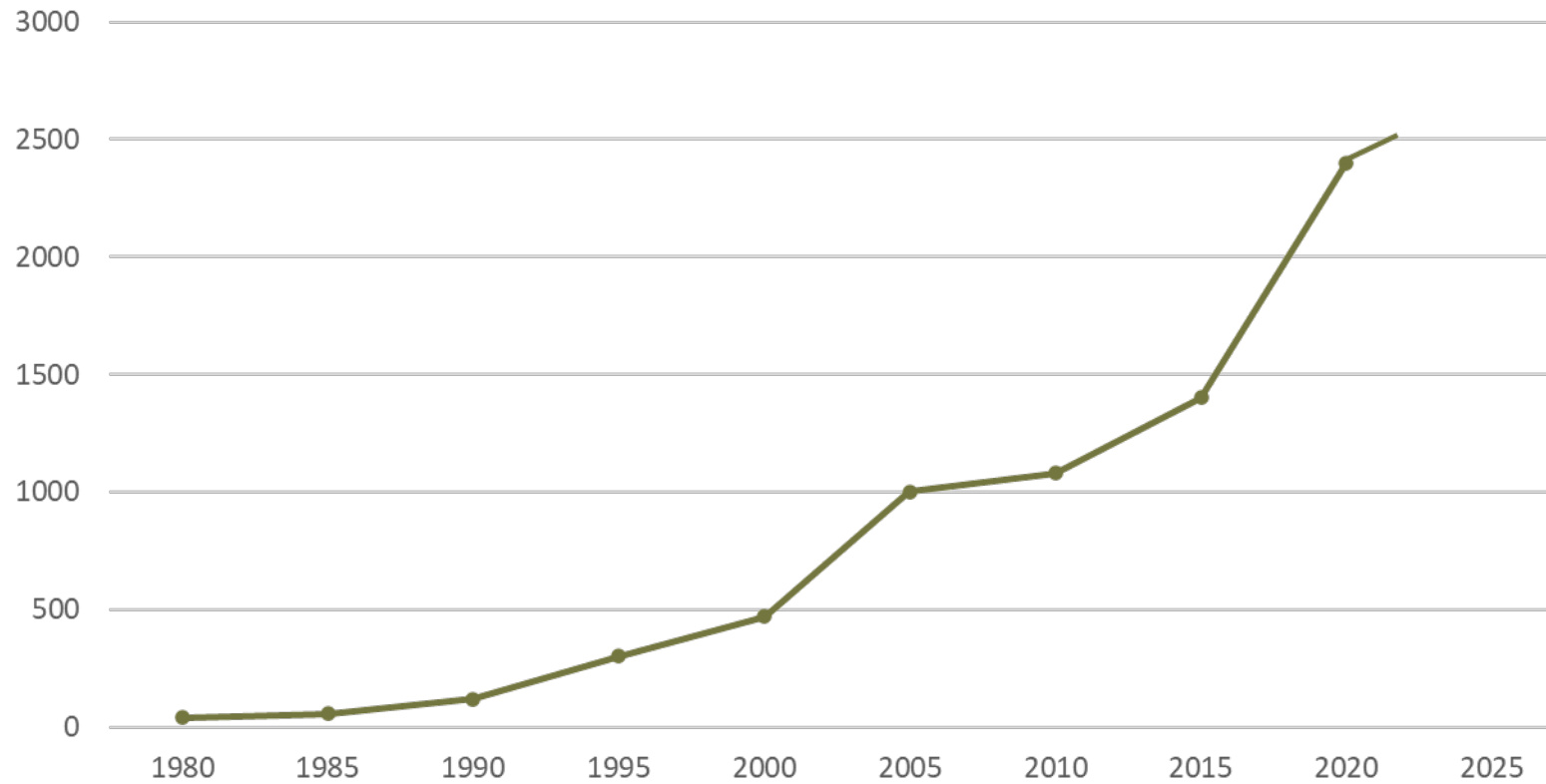


Vida's 12 sawmills



Vislanda	330.000 m ³
Borgstena	310.000 m ³
Bruza	300.000 m ³
Nössemark	230.000 m ³
Hästveda	230.000 m ³
Alvesta	240.000 m ³
Urshult	190.000 m ³
Hestra	170.000 m ³
Vimmerby	230.000 m ³
Orrefors	160.000 m ³
Mörlunda	190.000 m ³
Tranemo	130.000 m ³
Total	2.710.000 m ³

Vida's production





The forest in Sweden

- **70 %** of Sweden is covered by forest.
- **50 %** of Sweden's forest is owned by 320 000 private persons.
- **25%** is owned by companies.
- **17%** is owned by the state.
- ***For every*** tree we harvest, we have to plant at least two new.



The forest is growing

Vida Forest

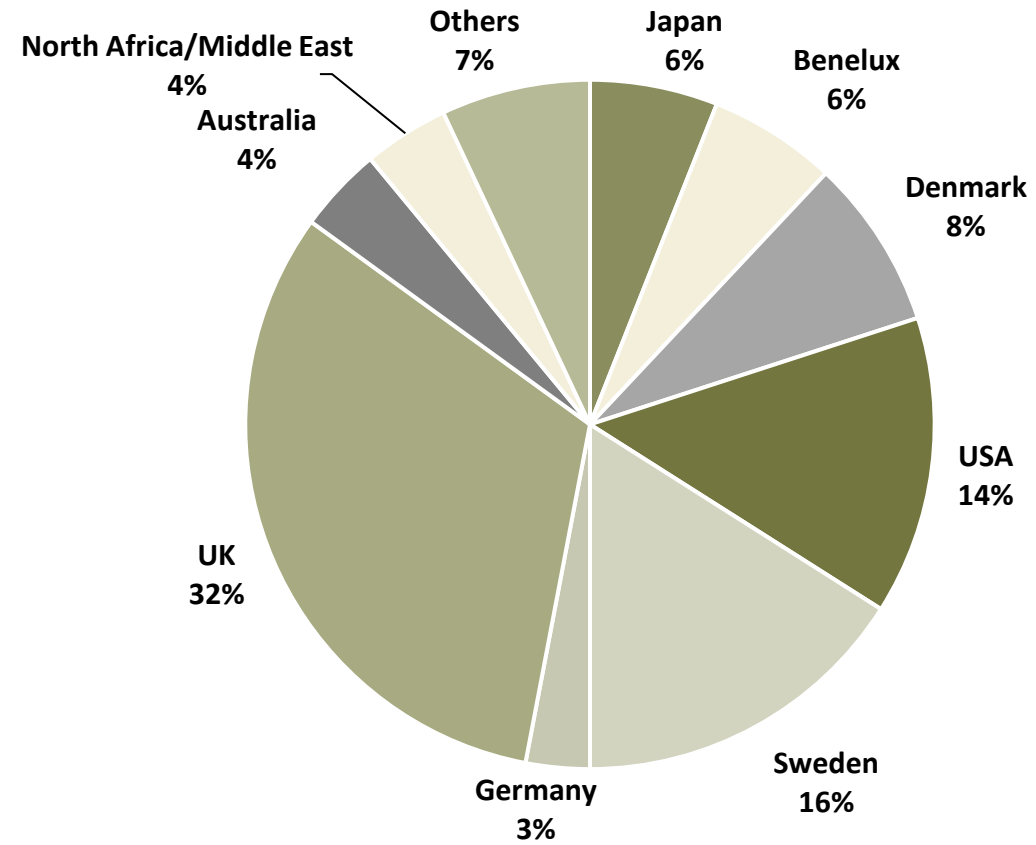
Vida Forest is the Group's purchasing company with some 40 local timber buyers.





Vida buys the raw material from local forest owners in the south of Sweden

Our markets



Vida Packaging

Complete packaging and logistics solutions



Vida Packaging

Turnover/Revenue:	£80 million
Number of units:	9
Employees:	330
Pallets:	2,3 millions
Pallet collars:	3,2 millions
Cable drums:	200 000 pieces

Vida Energy

With the mission of recycling sawmill residues





Vida Energy

Number of units: 1

Employees: 35

Vida Pellets: 65 000 tons

Vida Stable bedding: 2 milj chip bales

Branches and tops 2 million m3s bi-products from sawmills
and from the forest (*post harvest residuals*)

Vida Building

Create energy efficient and environmentally friendly homes from wood





Vida Building

Turnover: £20 million

Number of units: 2

Employees: 60


Share of export: 15 %

Production capacity: approximately 20 houses and over 300 apartments per year.

A photograph of a dense forest of evergreen trees, likely spruce or fir, with a misty or foggy atmosphere. In the center-left background, a wooden observation tower or fire lookout is visible through the haze. The foreground is filled with the dark green needles of the trees.

Vision: To Grow

*We want to see both the company and
the employees develop and grow over time*



An important part for a vibrant countryside

- 1500 employees in about 20 smaller towns
- Each Vida employee creates indirect employment for an additional 3-4 people
- Great social responsibility and constantly working to strengthen our local commitment so that the countryside is kept alive



Vida makes a difference

