

CONSTRUCTION PLANNING

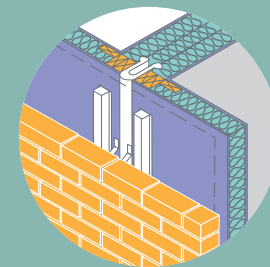


RESPONSIBILITY UNDER CDM REGULATIONS

Minimise heat from site works



Compartmentation providing fire spread resistance



Cavity barriers and fire stopping detailed



Follow-on trade works planned



Safe access as works proceed

ACTION

Avoid hot works e.g. site welding, roof felts and plumbing

Built-in as part of the structural timber frame

Installation methods and tolerances made clear

Avoid site cutting e.g. pre-determined holes

Install appropriate signage

FOR THE PRINCIPAL CONTRACTOR



RESPONSIBILITY UNDER CDM REGULATIONS

Fire safe environment across site



Named fire safety co-ordinator/marshals



Displayed fire safety plan

ACTION

Tidy site - litter and debris free
Secure site
Alarms accessible
Fire safe cabins
Regular site reviews

Workers safety inductions
Fire safety tool box talks
Fire points set up around the site

Visible noticeboards across the construction site

FIRE SERVICE



Communication

Fire service pack in the site office

IN AN EMERGENCY



Emergency contact numbers

FOR THE WORKER



RESPONSIBILITY UNDER CDM REGULATIONS

Heat hazard identification



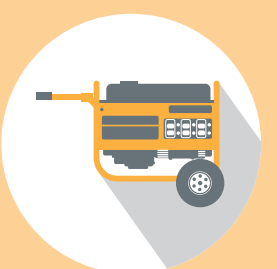
Clear and safe exit from site in case of fire



Permits for any tasks involving hot works and/or the removal of fire protection



Designated smoking areas



Plant safety

ACTION

Avoid drilling, cutting and grinding, minimising work permit requirement

Know what to do in case of an emergency

Know when work permits are needed and ensure they are obtained in advance

A zero tolerance policy

Ensure safe areas for charging and refuelling

Fire can destroy businesses and harm lives

All building sites, regardless of the construction method, are vulnerable to fire

CDM 2015 places a legal duty to all

Time to stop a fire occurring

