

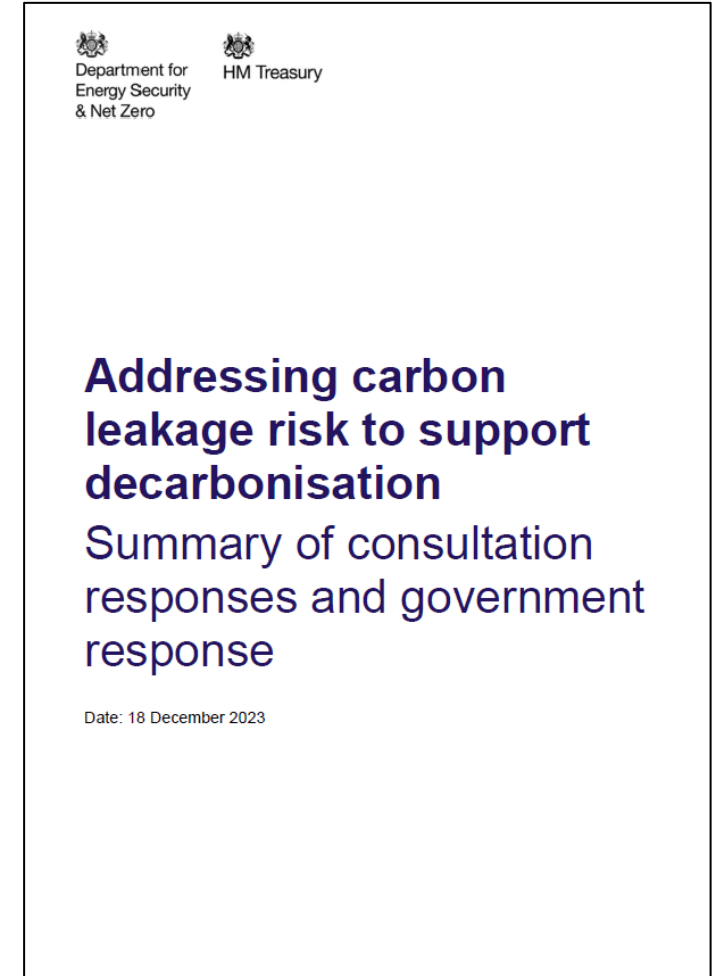
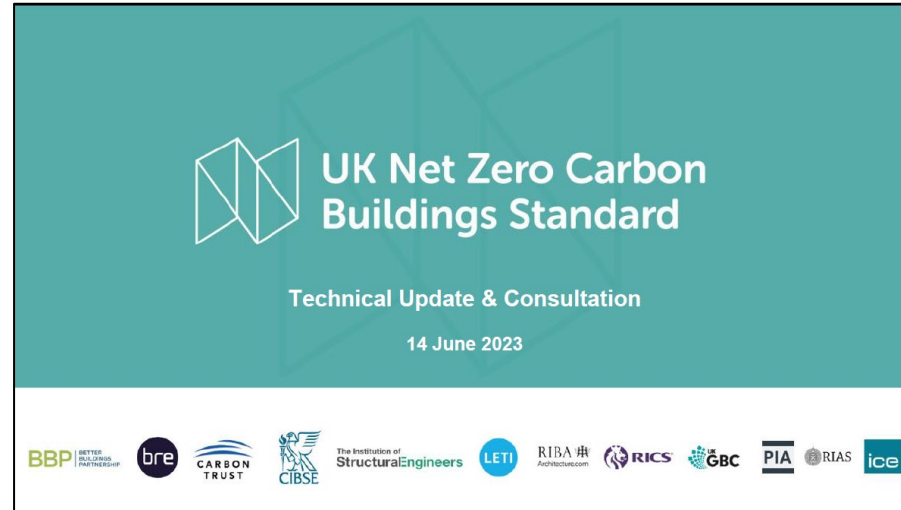
STA AGM/Conference Timber and Carbon



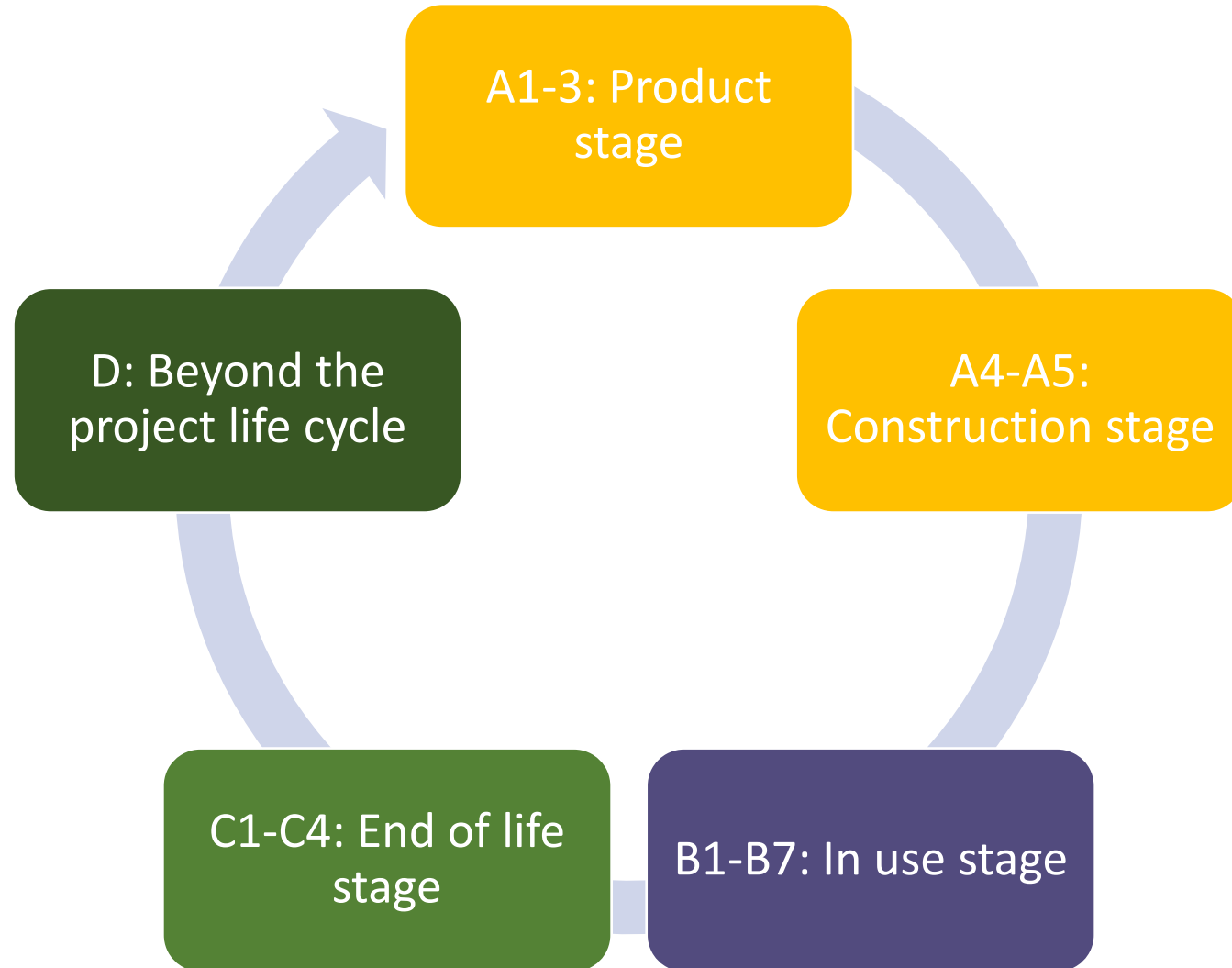
2024 / St Pierre Country Club / Chepstow

Chris Gaze

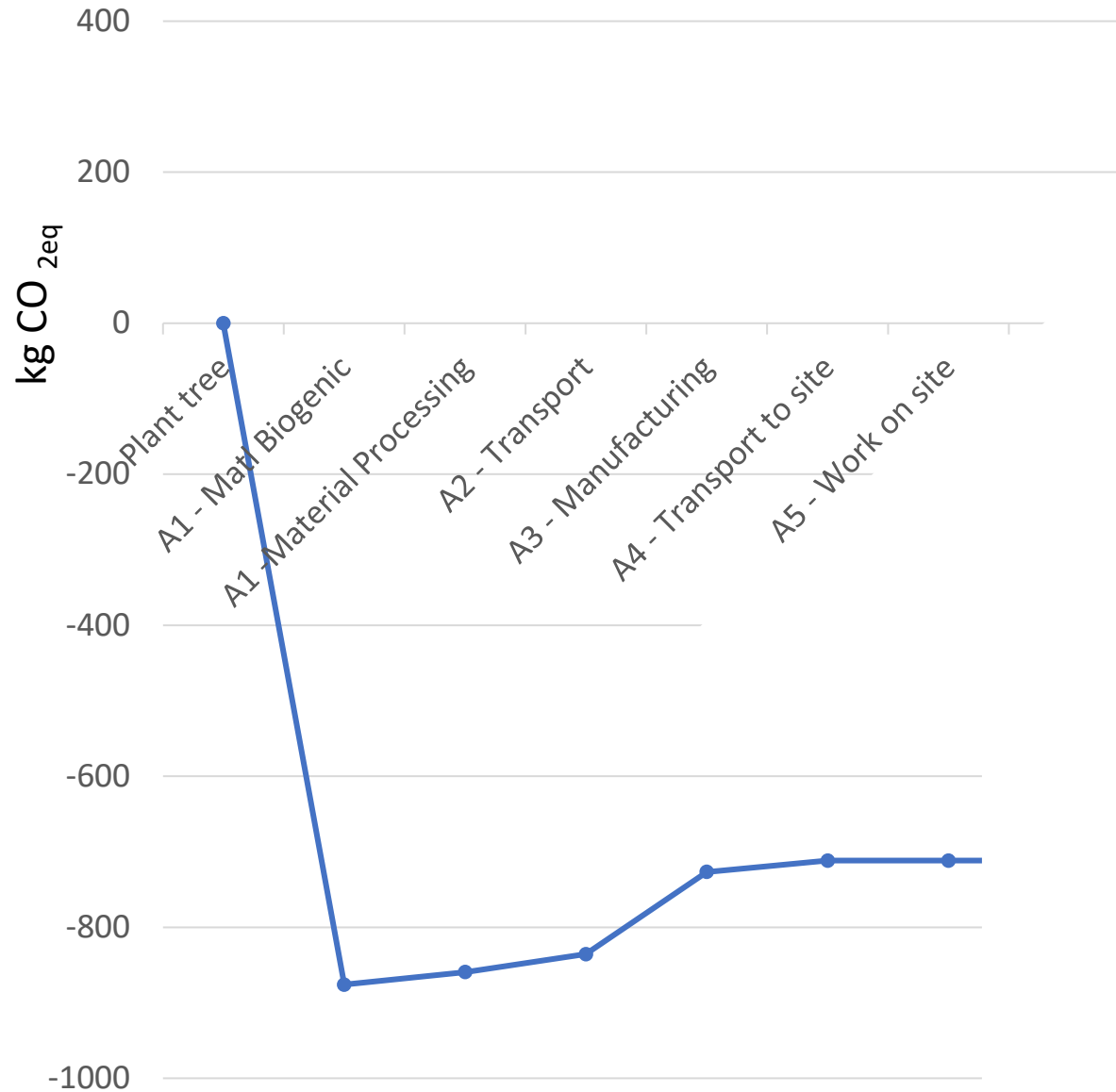
Responding on your behalf to ...



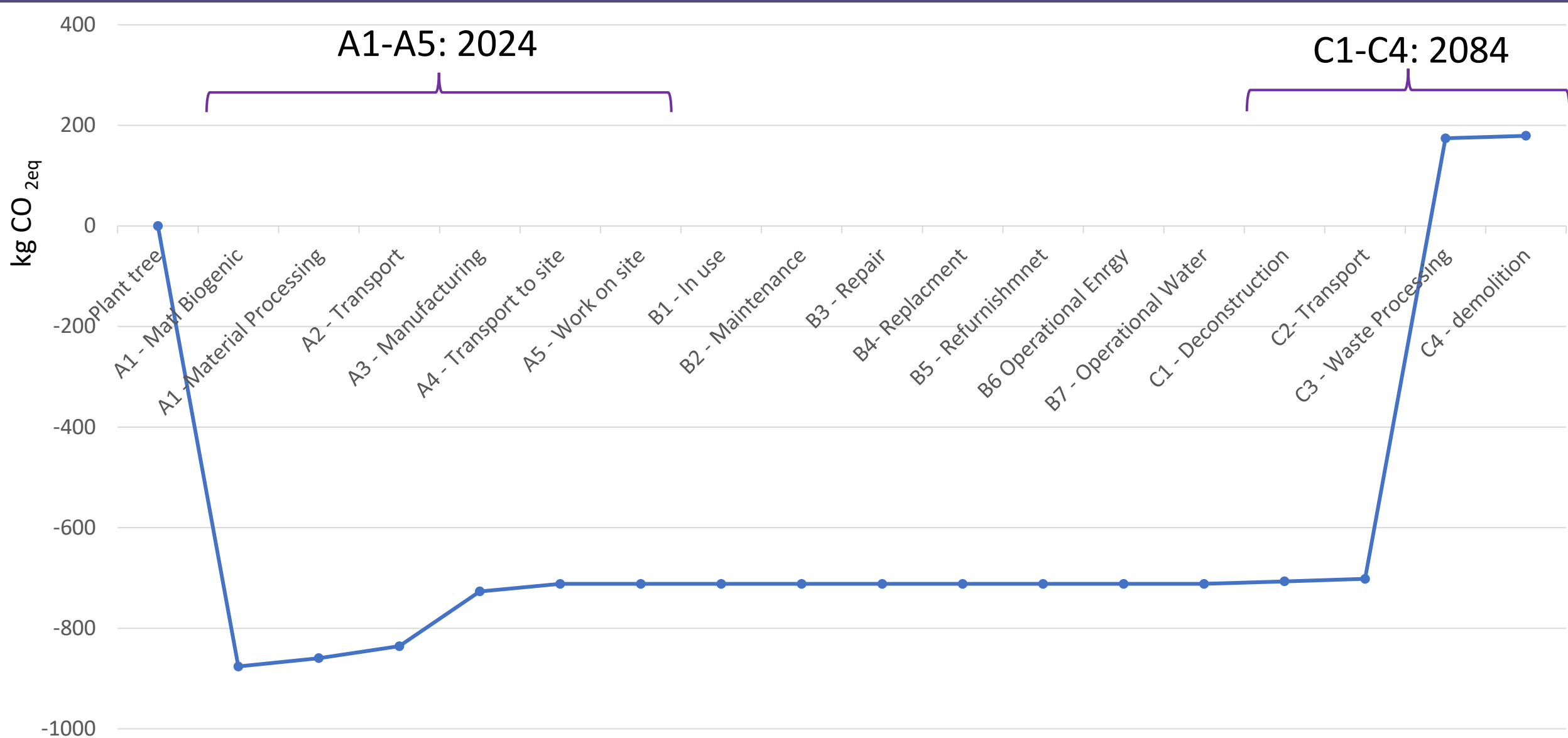
RICS whole life carbon assessment



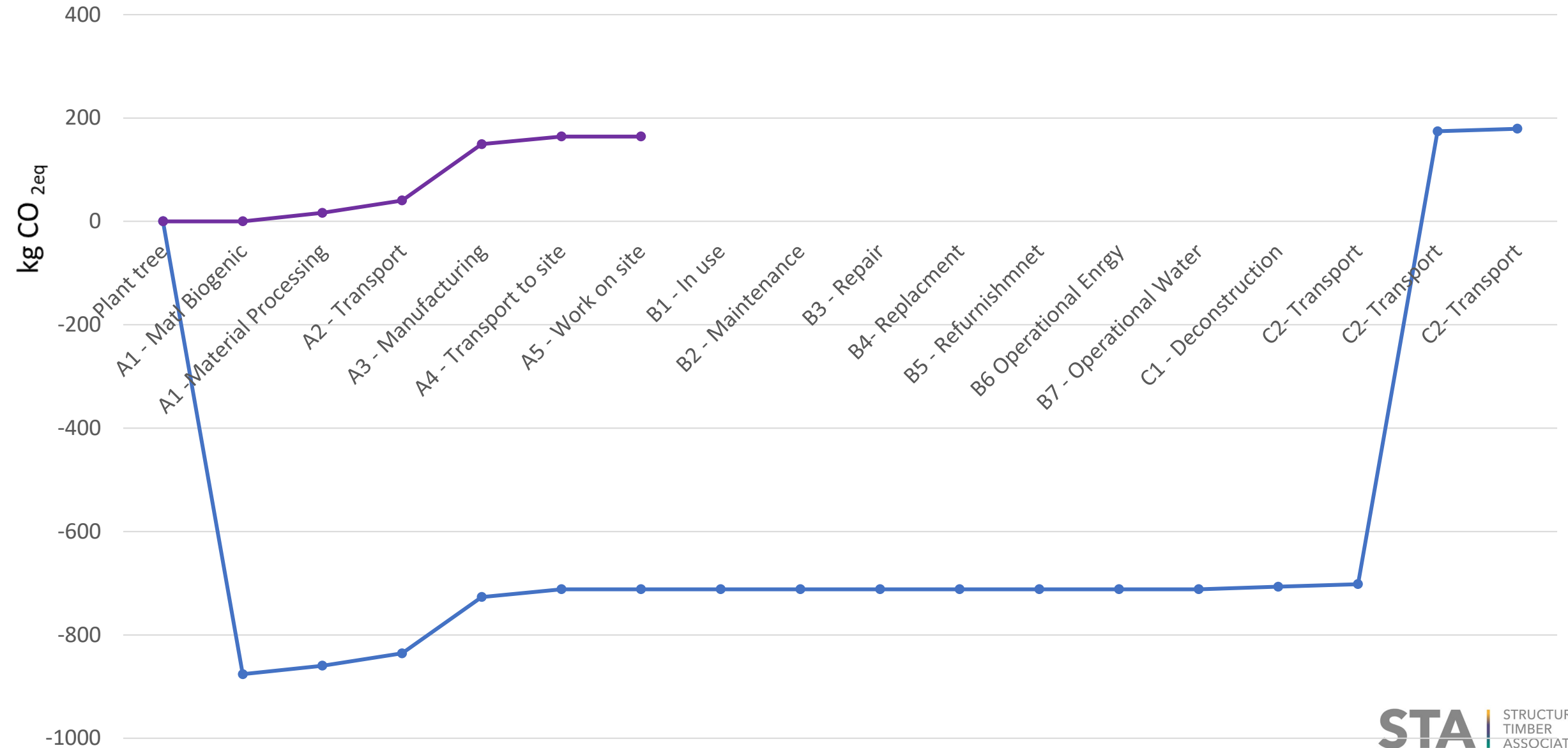
The calculation for 1 m³ of timber (indicative only)



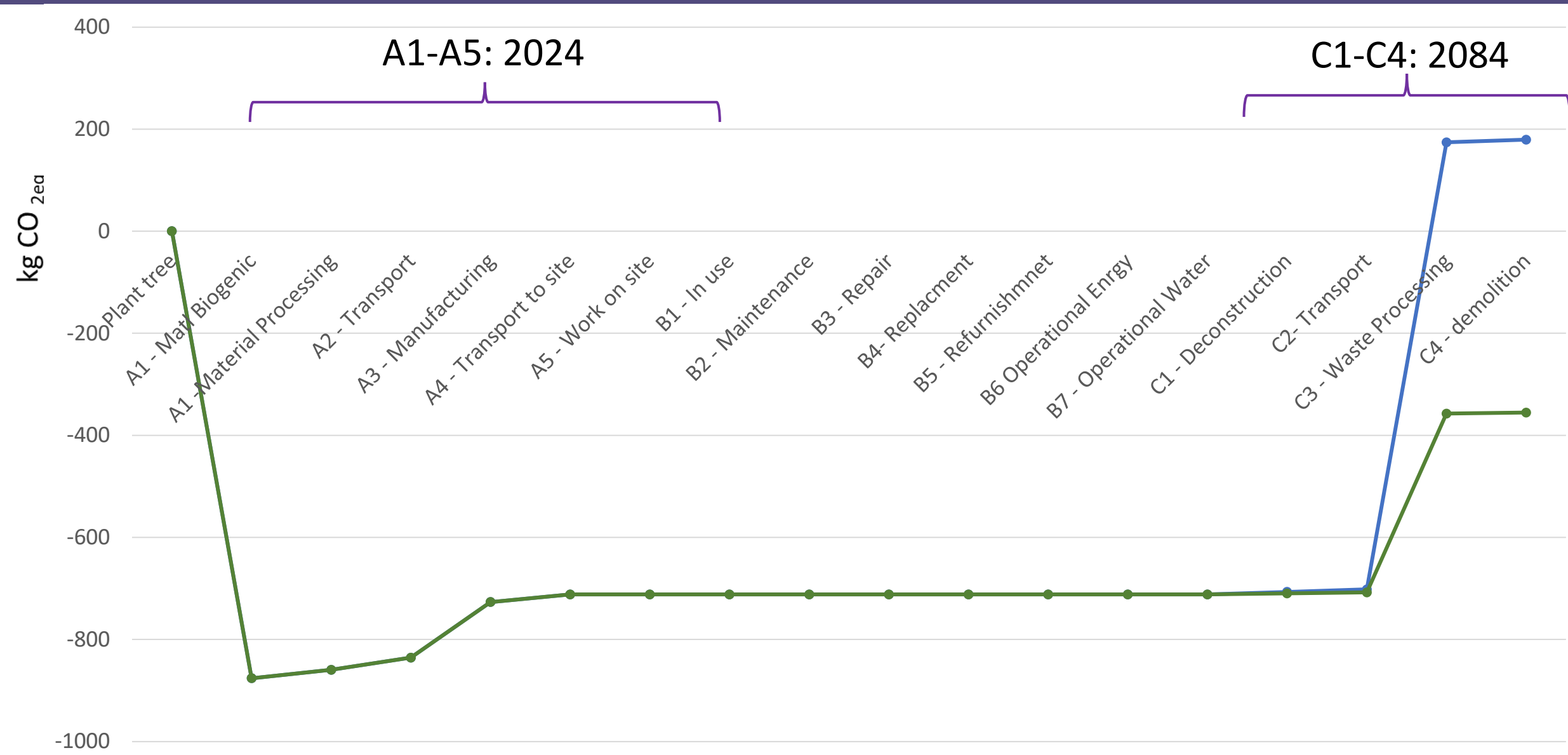
The calculation for 1m³ of timber (indicative only)



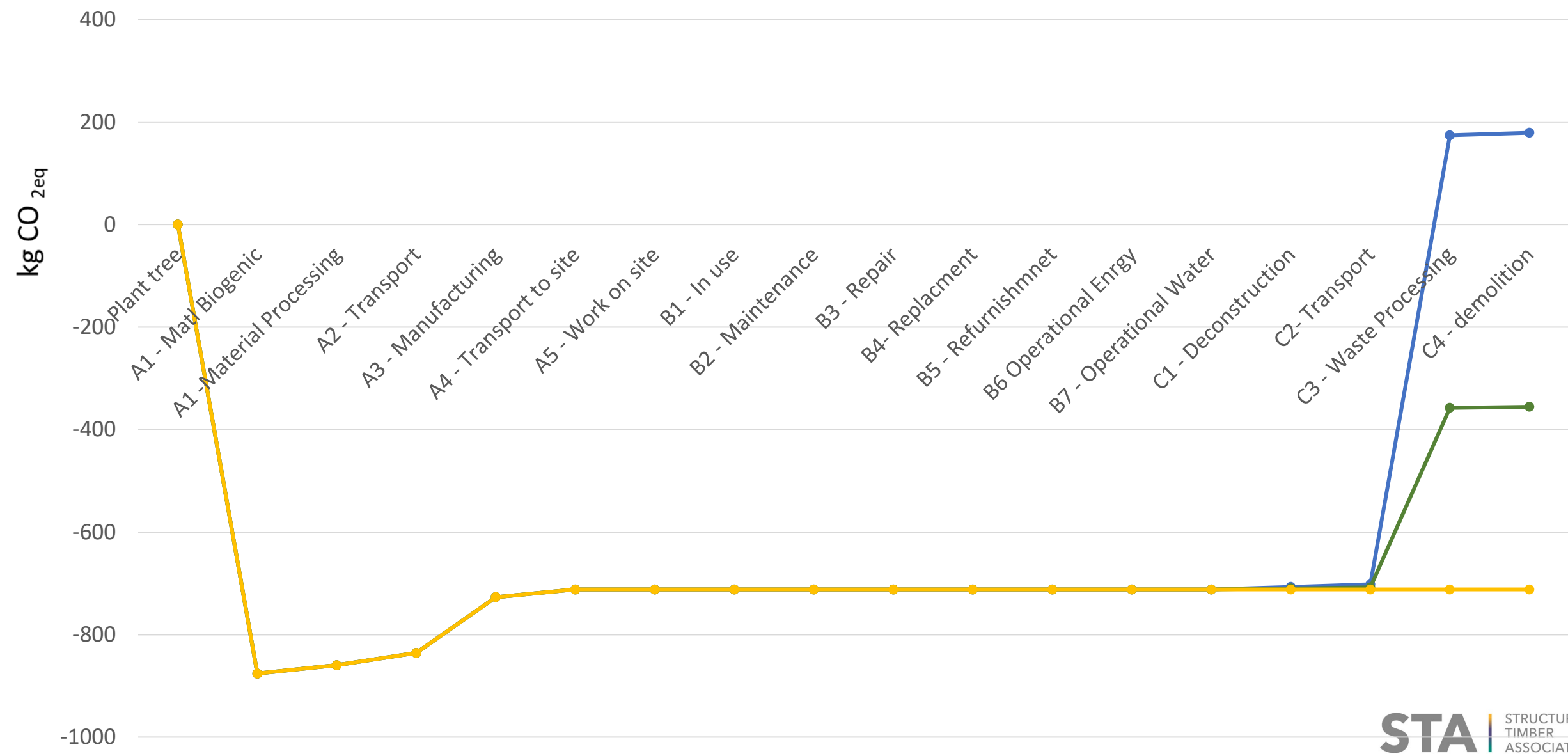
Upfront carbon only (ignore biogenic carbon)



Time Value of Carbon over 60 years



Time Value of Carbon over 120 years

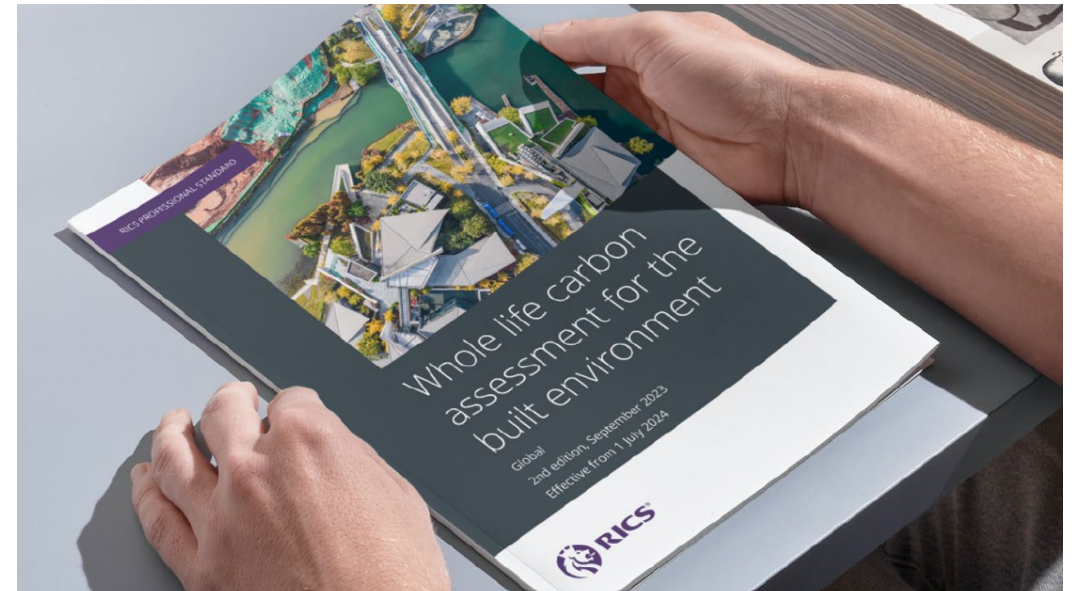


Key recommendations to RICS

- Time value of carbon
- 120 year life

Result:

- Benefit of carbon storage is recognised
- Time value of carbon in Appendix N as an additional method



What next...

Concept & Design phase WLCA calculations

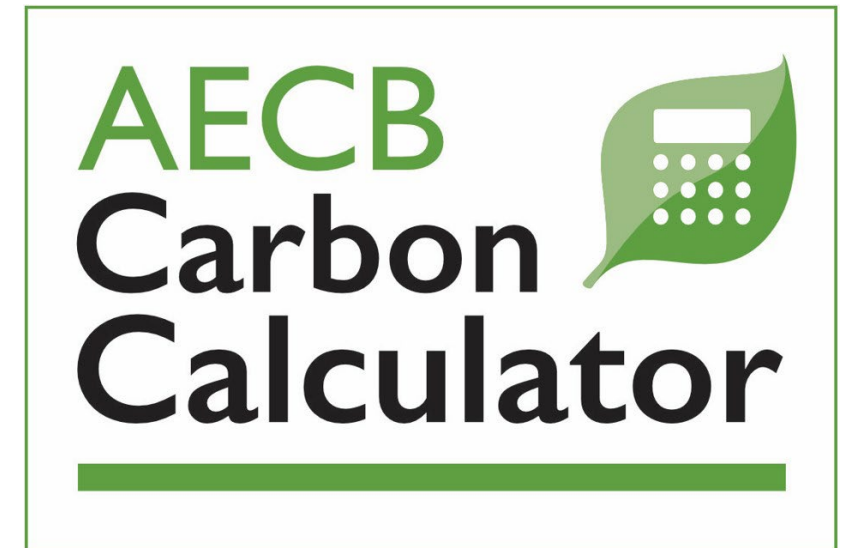
Source generic EPDs for the sector (per metre squared)

- Walls
- Floors

To complement the work with the Future Homes Hub

Construction and Post-Completion phase

Investigate adapting the AECB carbon calculator so that members can use it give accurate calculations that can be used by WLCA assessors – with an option of showing the time value of carbon



Recommendations to you

- Be prepared
- WLCA and EPDs are coming
- Government to seek views –could be this year
- We cannot rely on carbon sequestration – although we are still working on it
- Cut carbon now

