

Jerry Tate

Founder + Director
Tate+Co Architects

Navigating Structural Timber Construction to Address Net Zero

TATE
+ CO

A Journey in Timber

Presented by Jerry Tate
Founder + Director
Tate+Co Architects

2 July 2024





Contents

- 1. Practice Approach**
- 2. A Journey in Timber**

1.

Practice Approach



“

We are UK leaders in Regenerative Design





“

We are architects, masterplanners and interior designers.

Passionate about regenerative design, we create environments that are sustainable, healthy and always connected to nature.

What we do



Architecture

Including

Concept Design | Detailed Design and Tender Packages | Passivhaus Design | Pre-application Enquiries | Planning Applications | Planning Agent Role | Building Information Modelling (BIM) | Lead Consultant and Design Team Coordination | Contract Administration | Principal Designer (CDM and BSA) | Post Occupancy Evaluation



Masterplanning

Including

Urban Design | Feasibility Studies | Vision Documents | Development Framework Documents | Outline Planning Applications | Lead Consultant and Design Team Coordination



Interior Design

Including

Concept Interior Design | Detailed Interior Design for construction | Interior Design Coordination | Furniture, Fixtures and Equipment Specification | Site Supervision



How we do it

Understand what is already there

Develop a holistic strategy

Integrate nature

Make space for communities

Stakeholder engagement

Whole life carbon

Get the best team together

Really listen



Why do we do it

“

98% of our clients would work with us again. What they most enjoyed about the experience was our ***collaborative nature and enthusiasm.***

98% of our clients ***would recommend us*** to a potential new client.

91% of our clients said the completed project ***met the brief well or very well.***

I really trust them. Nothing would stop me from working with Tate+Co again.

“

Clients describe us as strategic thinkers. They enjoy that we are able to unearth the true potential of their projects.

We get to the heart of what matters to define exactly what is needed, building friendly and trusted relationships along the way.



Education Design



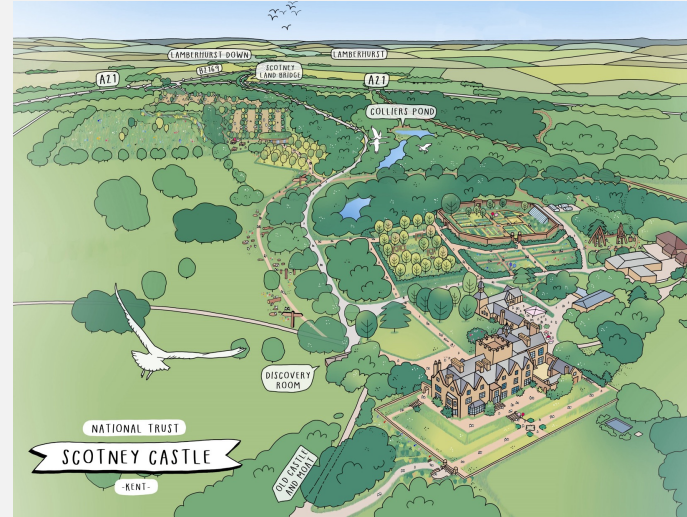
Residential Design



Hotel and Leisure Design



Design for Culture

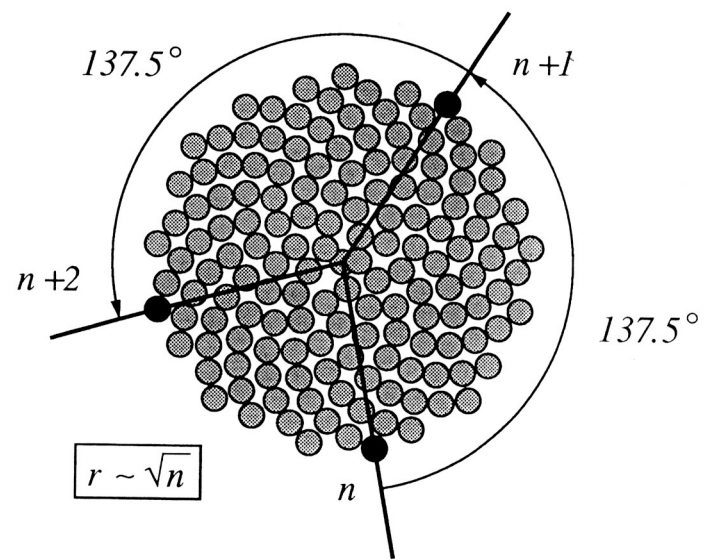


2.

A Journey in Timber

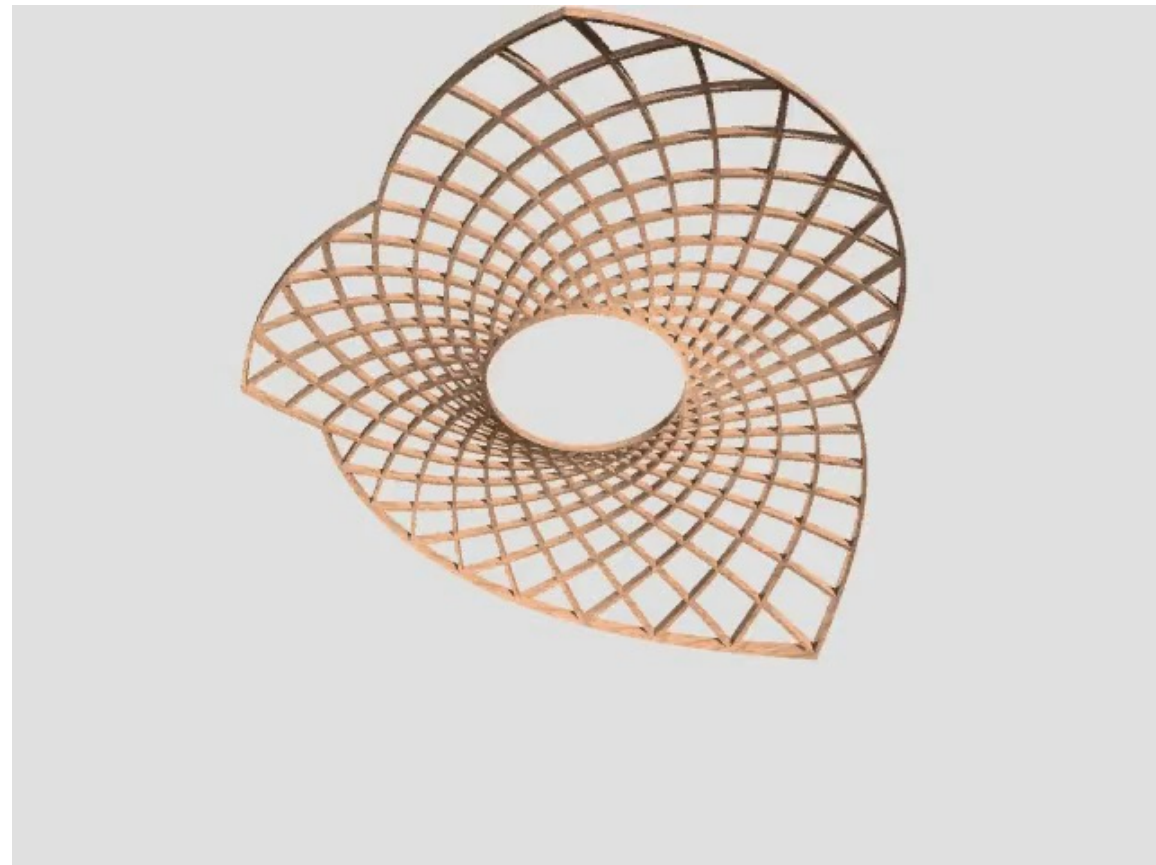


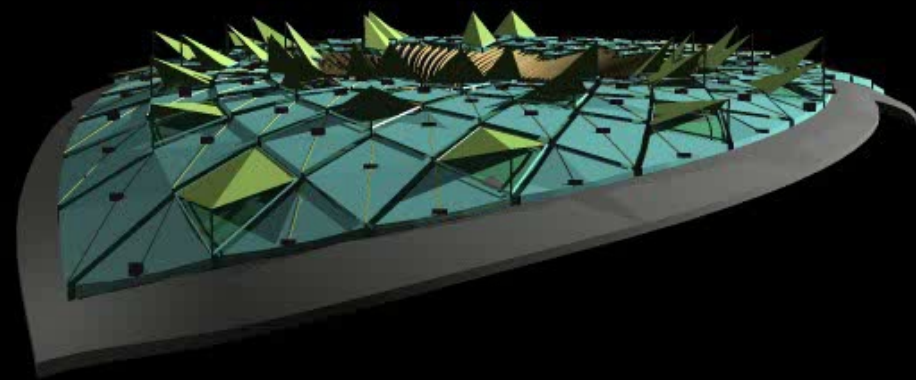


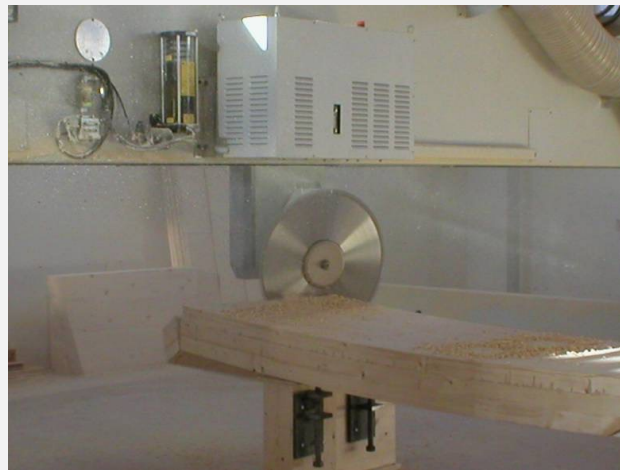


```
#define a 137.5 , /* divergence angle */
#include D      /* disk shape specification */

ω : A(0)
p1 : A(n) : * → +(a) [f(n0.5)~D] A(n+1)
```















“

This house is a template for the ideal, modern family home.

Kevin McCloud,
Grand Designs



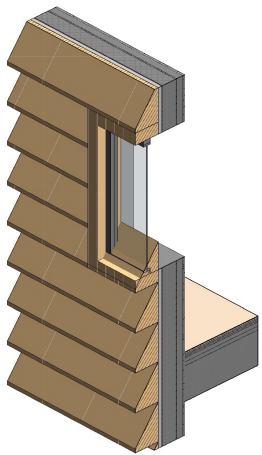
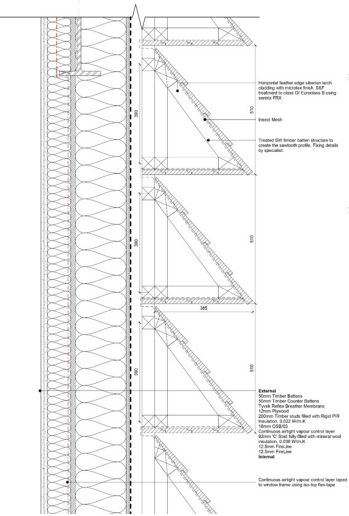
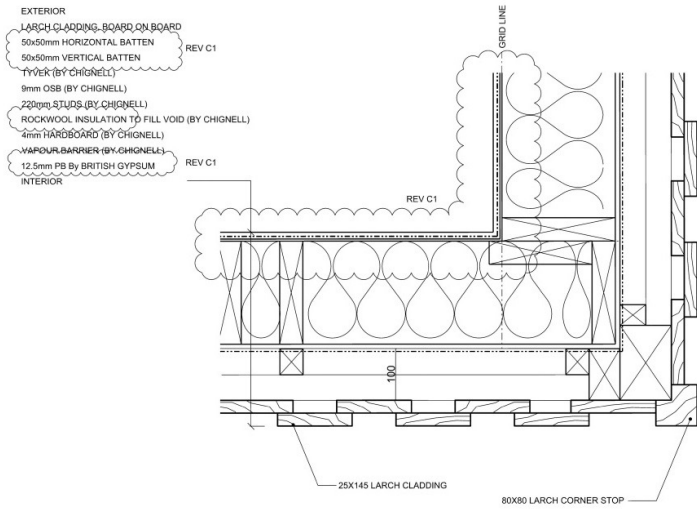
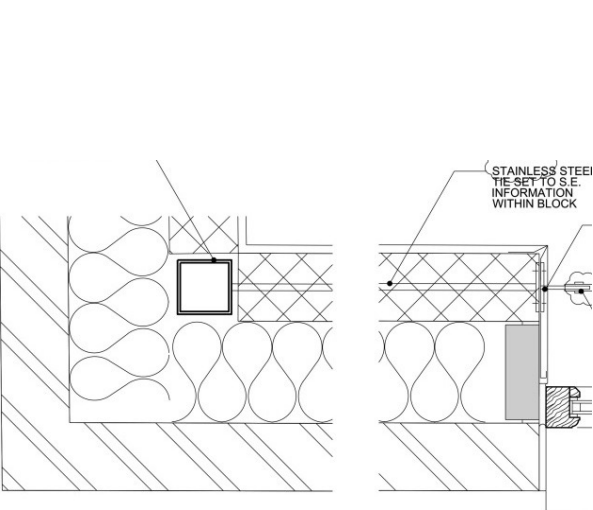
Masonry



Timber frame



‘Met-sec’



Wood-Fibre



Rammed Earth



Cob



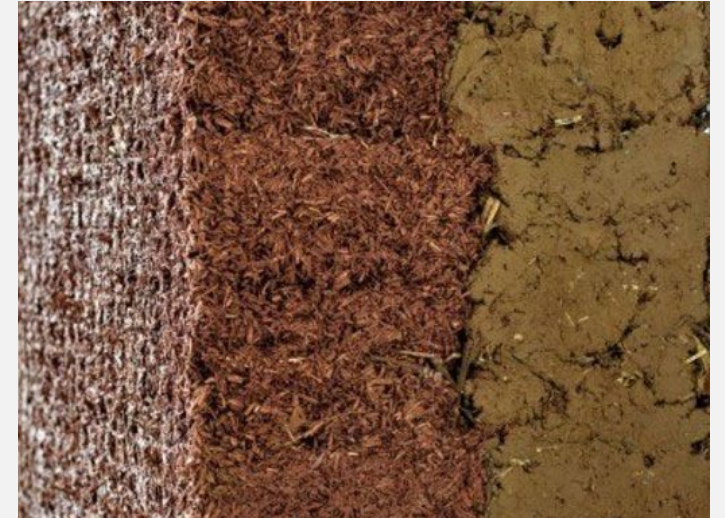
Warmcel



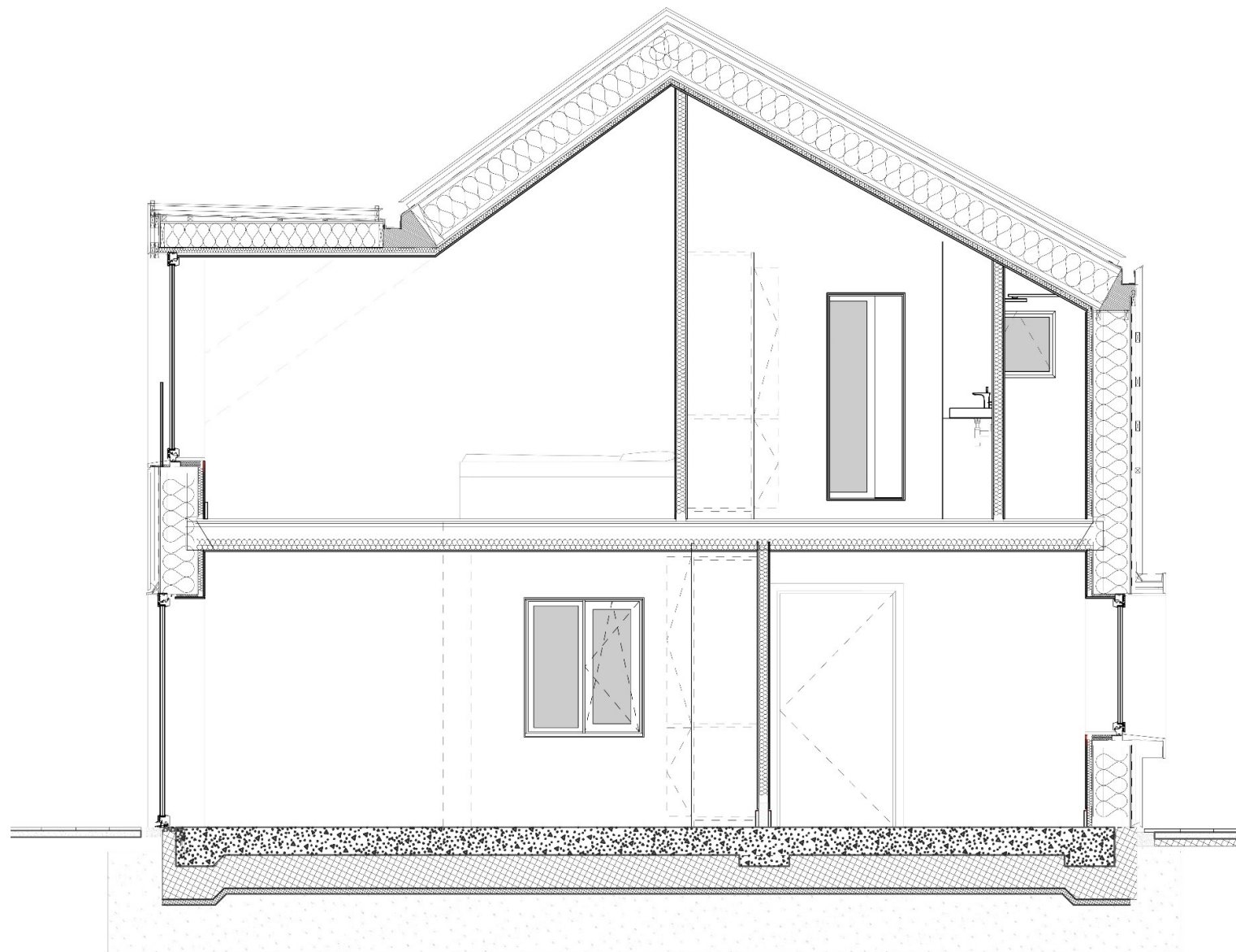
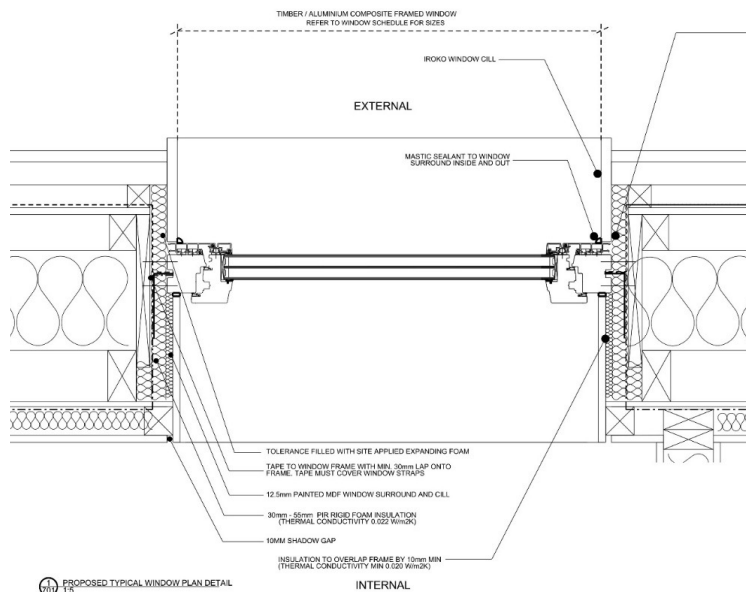
Hempcrete

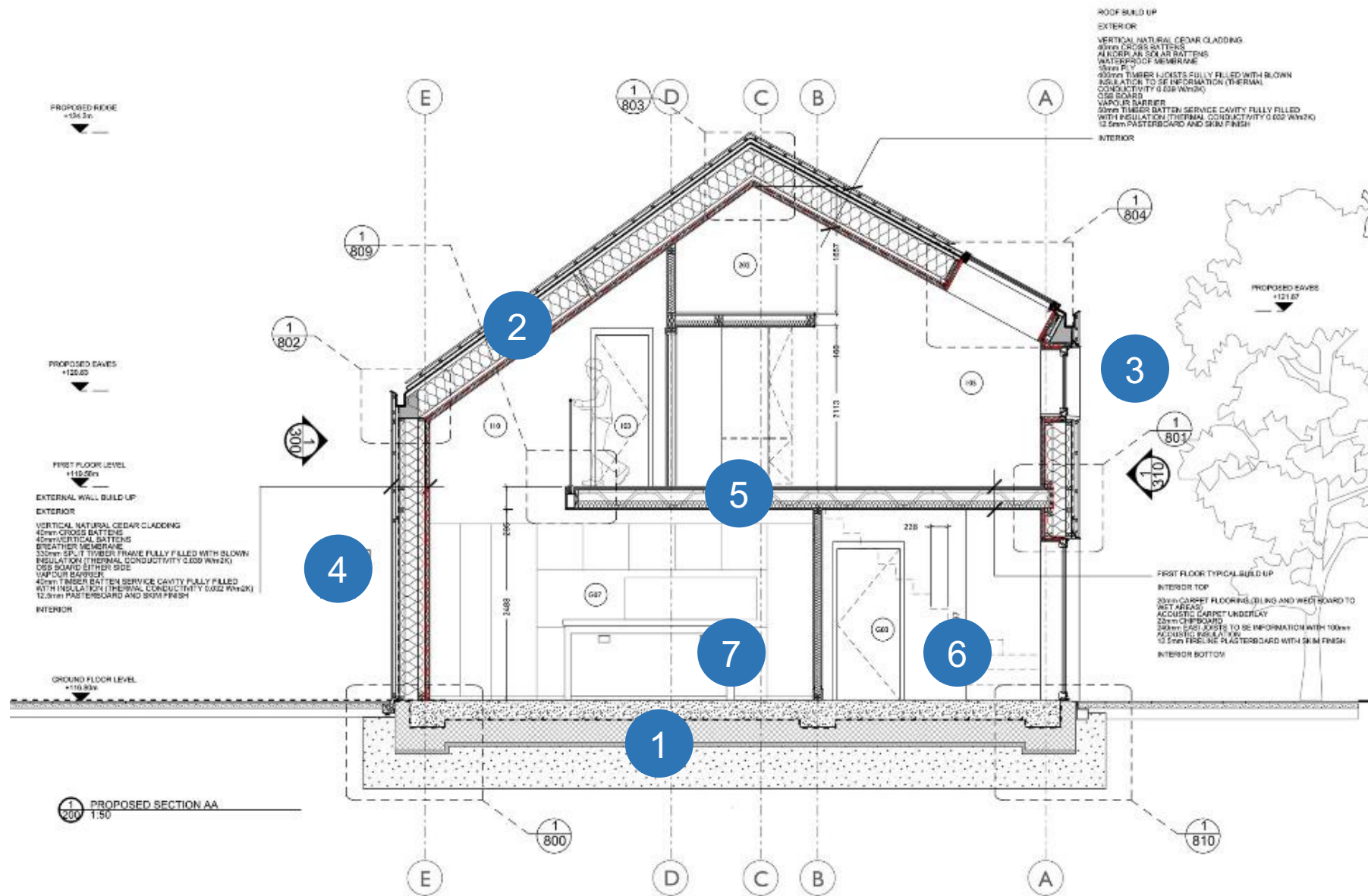


'Cobbauge'









- 1 Concrete
- 2 Timber Frame
- 3 Windows
- 4 Timber cladding
- 5 MVHR system
- 6 Hot water system
- 7 Sanitaryware



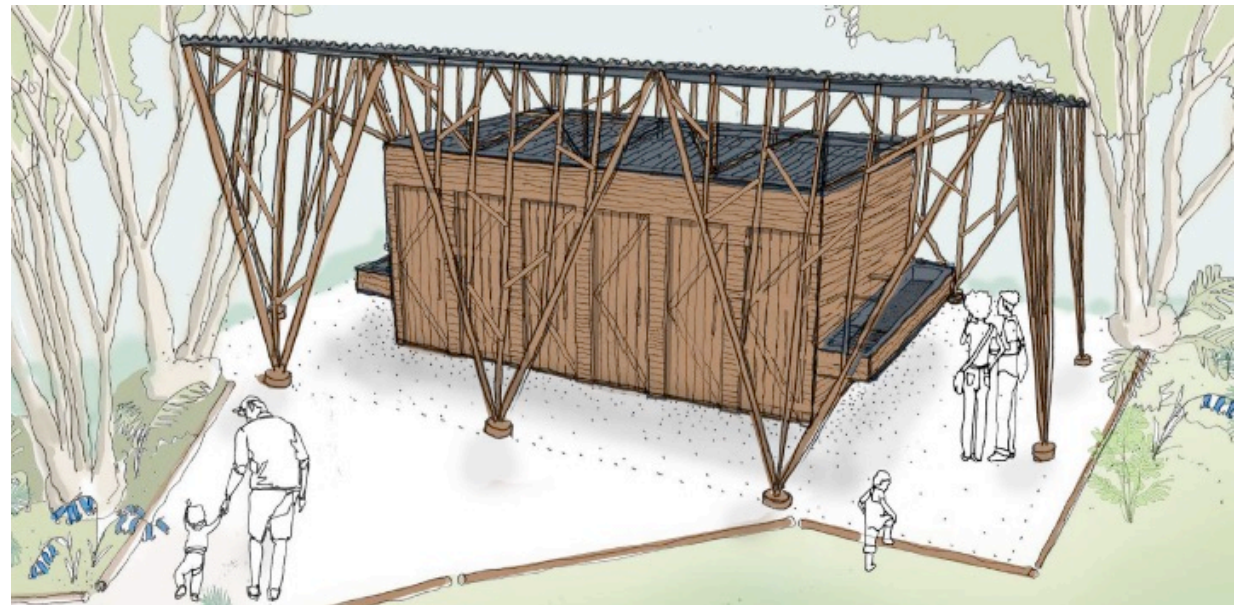
- 1 Concrete
- 2 Timber Frame
- 3 Windows
- 4 Timber cladding
- 5 MVHR system
- 6 Hot water system
- 7 Sanitaryware







Badgells Wood





“

Tate+Co has suggested, innovative solutions for the heart of our campus and designed a building that is architecturally interesting functional, flexible and sustainable. It has been fulfilling and fun working with their team.

Michael Wilson, Headmaster
Cranleigh Preparatory School



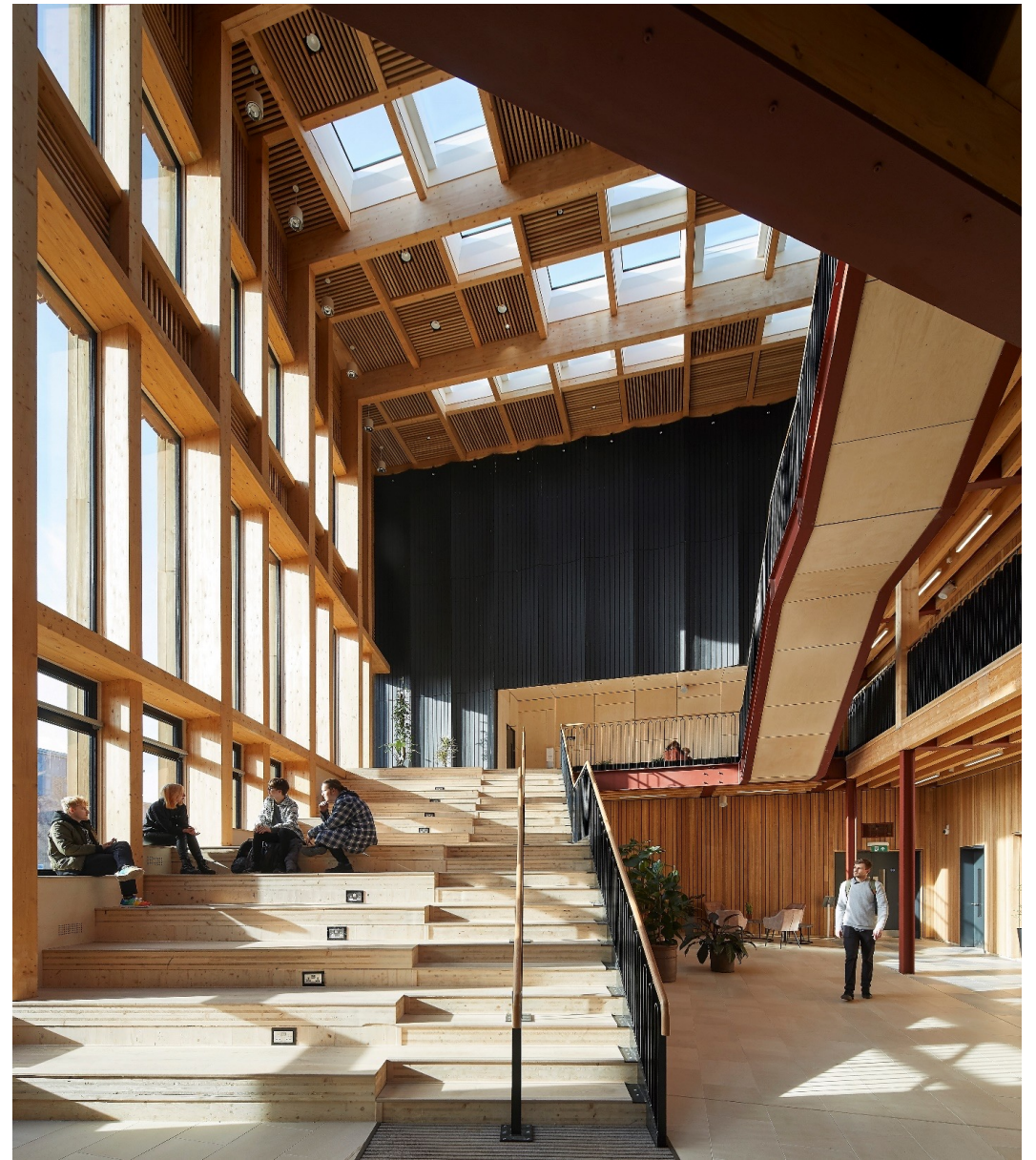
“

Tate+Co's design reflects the ambition and optimism of York St John University, making the most of the building's position in the centre of campus and showcasing our location in the heart of the city.

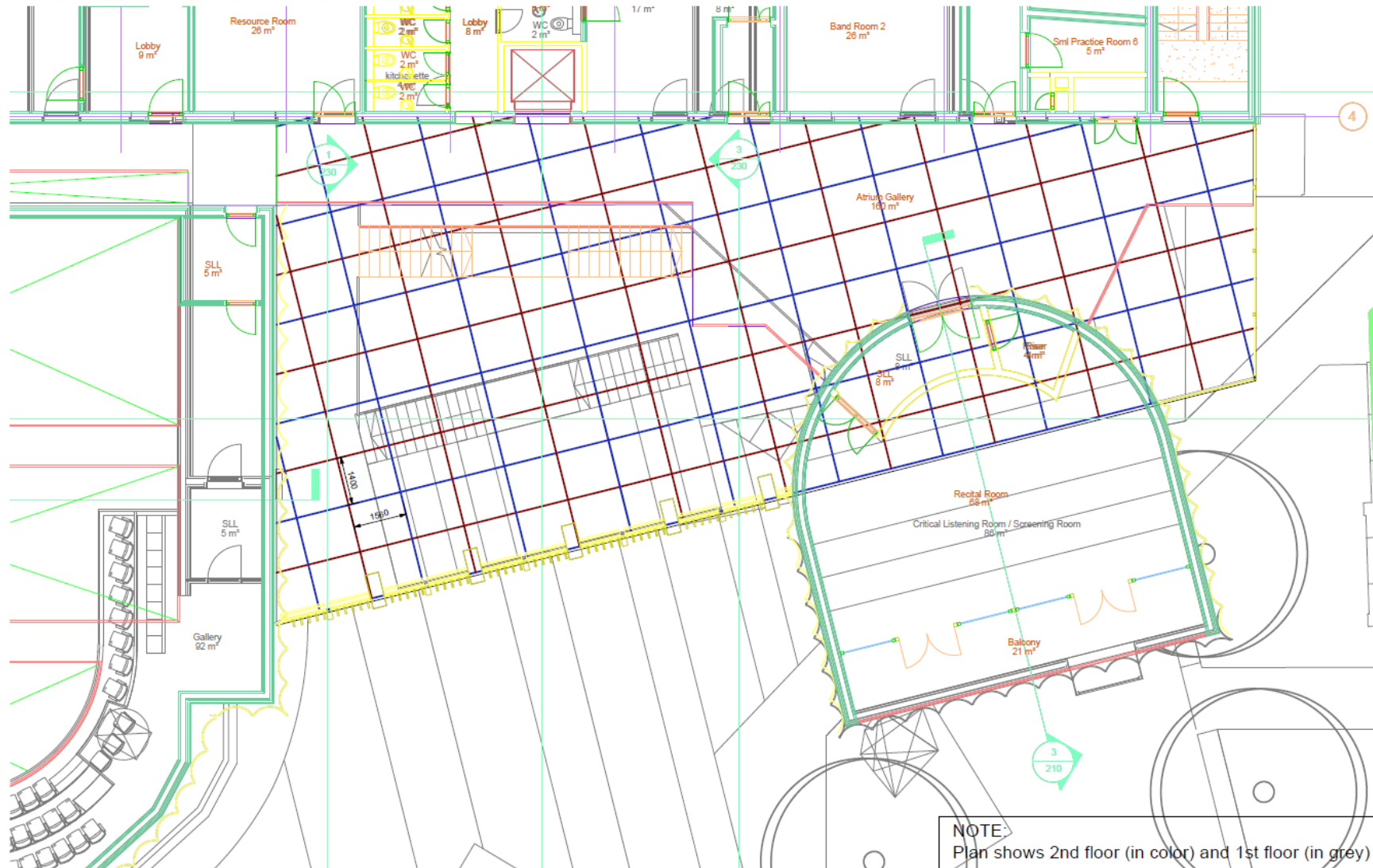
Rob Hickey, Executive Director of Innovation and Growth
York St John University

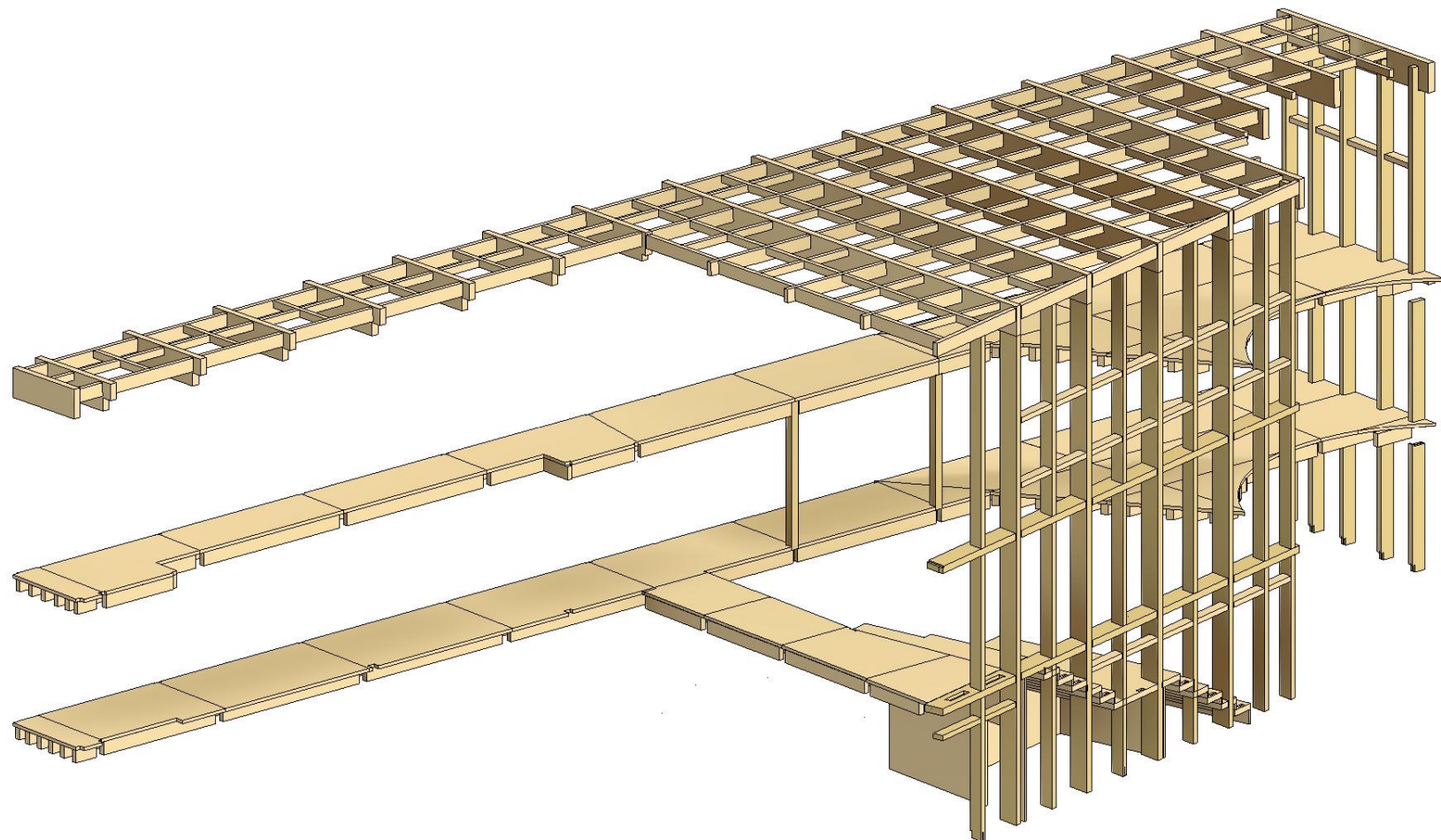
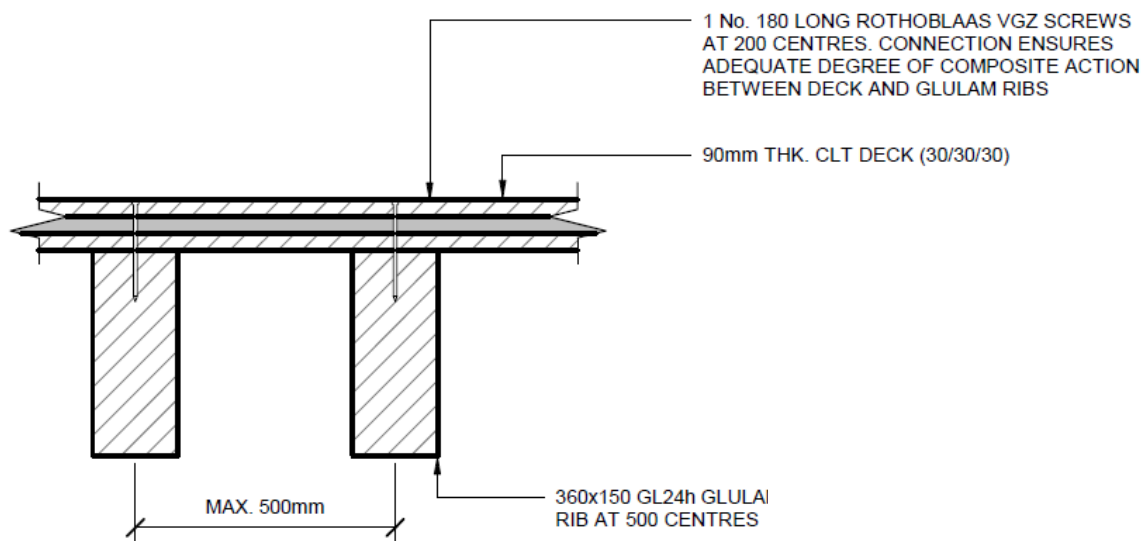






Grid dimensions: 1560mm x 1400mm





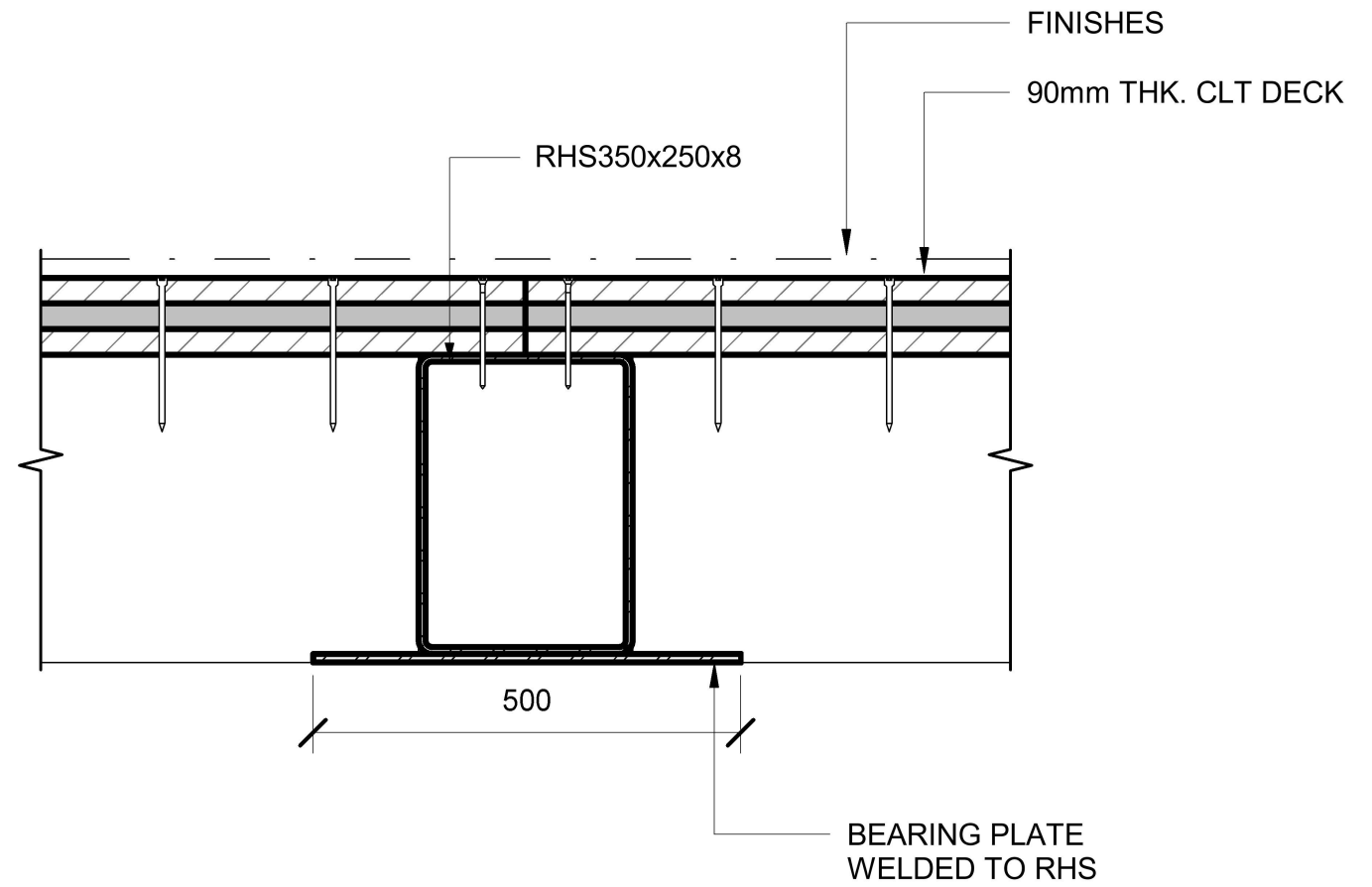


October 2020

December 2021



May 2021



September 2021



York St John University Creative Centre - Key Metrics

Passivhaus standard building fabric

- Roof $0.13 \text{ W/m}^2\text{k}$
- Walls $0.11 \text{ W/m}^2\text{k}$
- Ground Floor $0.13 \text{ W/m}^2\text{k}$
- Windows $0.86 \text{ W/m}^2\text{k}$
- Airtightness $2.61 \text{ m}^3/\text{hr m}^2$ at 50 Pa

$73 \text{ kWh/m}^2/\text{year}$ regulated energy use

$900 \text{ kgCO}_2\text{eq/m}^2$ upfront embodied carbon

$1,100 \text{ kgCO}_2\text{e/m}^2$ embodied carbon (A-C)

$2,500 \text{ kgCO}_2\text{e/m}^2$ whole life carbon (A-C)

$400,000 \text{ kgCO}_2\text{eq}$ sequestered carbon in timber

$6.8 \text{ kWh/m}^2/\text{yr}$ on site renewable generation

54% Biodiversity Net Gain

BREEAM Excellent







TRURO SCHOOL

In collaboration with





TATE
+ CO

+44 (0) 20 7241 7481
studio@tateandco.com
www.tateandco.com